

# *Your strategic project partner*

**COMPANY INTRODUCTION**



A QUARTER OF CENTURY IN OIL & GAS  
**25<sup>th</sup>**

Oilfield Equipment & Water Treatment Supplier

**I.M.G.**  
INTERNATIONAL



# ABOUT I.M.G.



**“The only way to do great work is  
to love what you do.”  
— Steve Jobs**



I.M.G. INTERNATIONAL S.R.L. is a 100% privately owned company, and sole representative of high reputed companies worldwide.

I.M.G. INTERNATIONAL S.R.L. focuses on the **Oil & Gas, Petrochemical, Power Generation, Marine, HVAC & Infrastructure fields**, and with our strong relation with several manufacturers and stockiest worldwide we can satisfy our customers' requests with complete solutions of products according to their techno-commercial and delivery requirements.

# SCOPE OF SUPPLY

*Valves (manual/actuated)*

*Special forgings and flanges*

*Monolithic insulating joints*

*Piping **bulk material** (pipes, BW & forged fittings, bolts & gaskets)*

*Flexible **hoses** and connections*

*Nozzles*

# WHY I.M.G.?

Top reasons to choose  
I.M.G. INTERNATIONAL S.R.L.

## High quality R&D manufacturing products

According to our expert team and principles, we are able to provide customized design based on customer requirements.

## Fulfill requirements of the international standards

International standards such as: ASMI, ANSI, DIN & etc.

## Competitive prices with premium warranty

We deal directly with the top qualified manufacturers and avoid any 3rd party involvement.

## ISO certified for manufacturing and trading

Continuously monitoring and improving the performance of organization standards.

## Mega projects for oil & gas track records

Most of the projects we have delivered are directly to Governments or its subsidiaries

## After-sales service

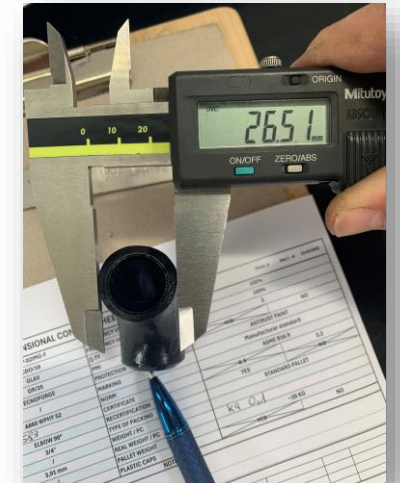
With professional on-hand experience, our Customer Service team is always prepared to solve any type of query

## Multilingual organization

Cancellation of communication barriers which is supported by an efficient team of multilingual people

## Payment agreements

We provide flexible payment options to suit customers' needs



# QUALITY CONTROL - PMI - HEAT TREATMENT

A photograph of an industrial facility, likely an oil or gas processing plant. The scene is dominated by large, yellow-painted pipes and valves. In the foreground, a large pipe is wrapped with a thick, dark red or maroon insulation material. To the right, there are several large, grey metal cabinets or control panels. The background shows more industrial structures and a clear sky. The overall lighting is somewhat dim, suggesting an overcast day or a shaded area.

# OUR PRODUCTS

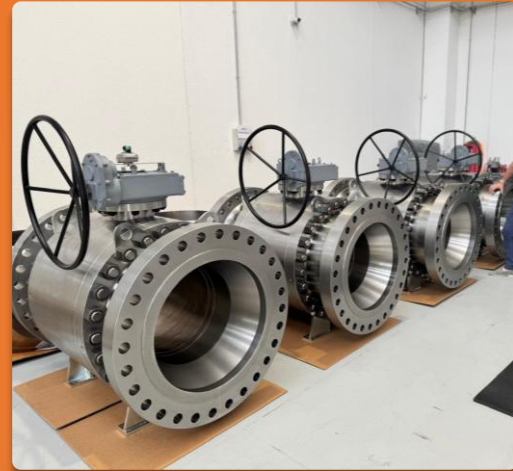
WHAT WE SUPPLY



# FLANGES

A huge range of flanges in any kind of steel and without any limitation in size. In particular, we can supply welding neck, blind, slip on, socket weld, lap joint, long welding neck, spectacle blind, threaded. We can also provide special pieces such as anchor flanges, adaptor flanges, swivel flanges, drip rings, flanges with overlay cladding and closures for pig launcher and receiver.

- Materials: carbon steel, stainless steel, alloy steel, nickel & alloy copper nickel.
- Standards: ASME – API - NORSK
- Pressure Rating: 150# up to 2500# (ASME) & 3K up to 10K PSI (API)
- Size: Full Range
- Thickness: SCH 10 to SCH 160 (as per international standards)
- Optional: surface cladding (internal & external)



# VALVES

Any kind of valves: globe, check, ball, gate, etc. manual or actuated.

## **FLOATING/TRUNNION MOUNTED BALL VALVES**

Low operating torque; blow-out proof design & antistatic device; design STD as per BS5351/API6D; testing as per API 598; face-to-face dimensions as per ASME B16.10; fire safe as per API 607 / BS6755 Part II / API 6FA; full/reduced bore: double block & bleed.

ON REQUEST: gear/actuated (pneumatic/motorized/hydraulic); high temp & cryogenic service.

## **GATE/GLOBE VALVES**

OS&Y type, bolted bonnet; low operating torque; design as per API 600 / BS 1873, testing as per API 598; face-to-face as per ASME B16.10 (RF/FF RTJ/BW); valve with back seat arrangement; solid/flexible wedge; plug type disc (globe valves)

REMARKS: based on the applicable standard the valve can be through conduit, cryogenic valves. NACE service, fire safe, hydrogen service valves & bellow sealed available



### **SWING CHECK VALVES**

Bolted Cover; design as per BS 1868 / ANSI B16.34; testing as per BS 6755 Part I; ON REQUEST: design as per API 6D (fully open); face-to-face as per ASME B16.10 (RF/FF/RTJ/BW)

REMARKS: based on the applicable standard the valve can be according to NACE Service and/or hydrogen service.

### **BUTTERFLY VALVES**

Low operating torque; blow-out proof design & antistatic device; design STD as per BS5351/API6D ; testing as per API 598; face-to-face dimensions as per ASME B16.10; fire safe as per API 607 / BS6755 Part II / API 6FA; full/reduced bore; double block & bleed.

ON REQUEST: gear/actuated (pneumatic/motorized/hydraulic); high temp & cryogenic service.

### **PLUG VALVES**

Low pressure drop across the valve: bi-directional cavity free passage; design STD as per API 599; testing STD as per API 598; face-to-face dimensions as per ANSI B16.10; fire safe as per API 607; suitable for ANSI 150 & 300 class pressures; self-lubricated type.

ON REQUEST: API 6D design; electrical/pneumatic/gear actuator; extended stem; PFA lined/higher alloy valves

# BW & FORGED FITTINGS



## FORGED FITTINGS (SW & Threaded)

Applicable standards: ANSI B16.11

Material of construction: carbon steel, stainless steel, Duplex & Super Duplex, copper nickel

Forged: 3000, 6000 & 9000 LBS

### TYPES:

- Reducing bushings
- Hex/square/round head plugs
- Caps
- Elbows
- Equal/reduced/union tees
- Nipples
- O-let



## BUTT WELD FITTINGS

Applicable standards: ANSI B16.9

Material of construction: carbon steel, stainless steel, alloy steel, nickel & alloy copper nickel;

Thickness: SCH 10 to SCH 160

### TYPES:

- BW elbows (45/90° LR/SR)
- BW caps
- BW equal/reduced tees
- Concentric & eccentric reducers



# PIPES

A wide range of seamless pipes in any kind of steel and size.

## **SEAMLESS STEEL PIPES (up to 28")**

Seamless Steel Pipes in API 5L Gr B (PSL1 & PSL2) / ASTM A106 Gr B / ASTM A 53 Gr B, ASTM A333 Gr 1/Gr 6 etc., available in single/double random lengths, plain end square cut up to 1 1/2" & beveled ends as per ANSI/ASME B 16.25 for 2" & above. Seamless pipes as per DIN standards, mainly DIN 1629, DIN 17175, DIN 2391, DIN 1630, DIN 17179, DIN 7173, DIN 17456/DIN 17458, DIN 2448 etc.

## **WELDED STEEL PIPES (ERW/HFIW up to 60")**

Welded Carbon Steel pipes to API 5L Gr B/ASTM A53 Gr B, available in single/double random lengths, plain end square cut up to 1-1/2" & beveled ends as per ANSI/ASME B 16.25 for 2" & above. ERW pipes as per DIN standards, mainly DIN 1626, DIN 1628, DIN 17178, DIN 17179, DIN 17455, DIN 17457, DIN 17177, DIN 2458 etc.

## **SEAMLESS (up to 24") & WELDED STAINLESS PIPES**

Seamless stainless steel pipes to ASTM A312. (Tp 304/L, Tp 316/L/T, Tp 321/H etc.), Duplex grades UNS S31803, Super Duplex grade UNS S 32750/S, 32760, super austenitic Grade Tp 904L, available in single random lengths.



# MONOLITIC INSULATING JOINTS

Pipeline insulating joints are used worldwide (on-shore and off-shore) for permanently controlling the flow of electrical currents or electrically isolating pipe sections in pipes and piping systems.

The effective management of cathodic protection programs results from the use of these highly reliable substitutes for flanged insulating systems.

Insulating joints eliminate short circuits, field assembly and maintenance. They are coated both internally and externally, 100% electrically tested and weld inspected.

Their manufacturing process is carried out in accordance with ISO 9001:2000 specifications

Upon request, we can supply monoblock insulating joints according to your specifications.





# STUD BOLTS & NUTS; GASKETS

Bolts and nuts, screws, studbolts threaded on full length and special pieces according to drawing.



Any kind of gaskets: spiralwounds, ring joints, graphite, PTFE lined, etc.



# SPECIAL PRODUCTS, FORGES AND NOZZLES

Prefabricated components, like pipe spools which are built on assembled pipes, flanges and fittings.

These assembled spools are delivered pre-mounted to the construction area.

Self-reinforced nozzles with plain end as well as with complex profiling in fully machined condition for pressure vessels designed to ANSI, ASME codes in all steel grades.

Nozzles, hollow forgings and self-reinforced nozzles are offered in carbon steel, alloy steel, stainless steel and duplex steel.



# FLEXIBLE HOSES

Comprehensive range of hoses to fit vast ranges of applications and operating conditions: air, chemicals, steam, water, oil & petroleum processes, LPG & gas

We supply different types of hoses, such as:

- metal hoses
- rubber hoses
- PTFE hoses
- vent/dust hoses
- composite hoses

**We believe that quality is our  
objective and customers'  
satisfaction is our main goal.**

Via Masero, 57  
10010 Scarmagno (TO) – ITALY  
Website: [www.imginternational.it](http://www.imginternational.it)  
Phone No.: +39 (0)125 639289

For any inquires, contact us at:  
[sales01@imginternational.it](mailto:sales01@imginternational.it)  
[m.riccardino@imginternational.it](mailto:m.riccardino@imginternational.it)  
[rossetto.andrea@imginternational.it](mailto:rossetto.andrea@imginternational.it)



[rossetto.andrea@imginternational.it](mailto:rossetto.andrea@imginternational.it)  
[m.riccardino@imginternational.it](mailto:m.riccardino@imginternational.it)  
[sales01@imginternational.it](mailto:sales01@imginternational.it)